

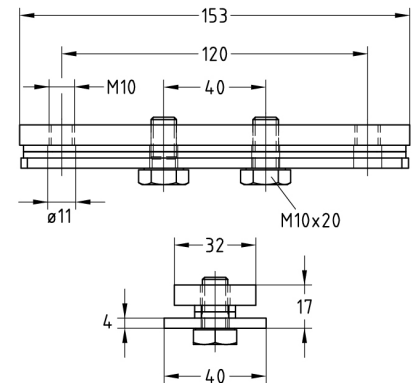
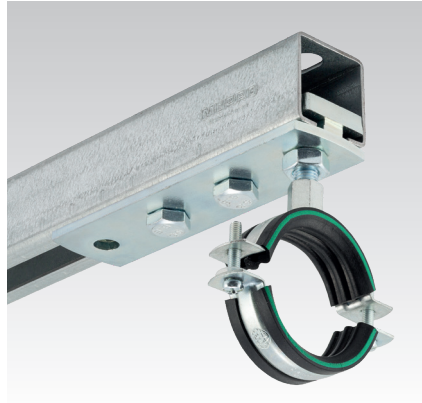
### MPC-Sliding shoes galvanised

#### Application

- Attachment of pipes with thermal, axial expansion
- Suitable for pipes mounted from above and from below
- Perfect solution for plastic pipes with large sliding movement
- For use in dry interiors

#### Your advantages

- Length of sliding distance can be freely determined by suitable selection of support channel length
- Can be mounted crosswise with slide guides 2.3 kN and 4 kN for large pipe movements in axial and radial directions
- For use with MPC-Support channels from 38/40 to 40/120
- One or two pipe clamps can be mounted depending on the application



#### Features

Material thickness of support channel [mm]	Max. recommended tensile load $F_z$ [N]	Max. recommended compression load $F_d$ [N]	Temperature range
2.0	7,000	7,000	to +300 °C
2.5		10,000	
3.0			

Connecting thread	For profiles	Part no.	Sales unit	Pack unit
M10	38/40-40/120	179745	25	Pieces



For installation in the MPC-Support channel 38/40, it is recommended to remove one of the spacers.