

Insulation clamps RTN+ type 2 and 4

two-piece, with single bossed clamps without lining and insulation shells, galvanised

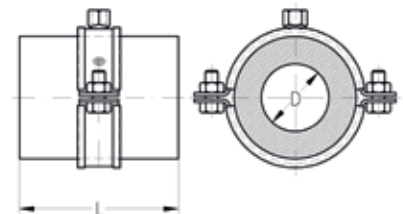
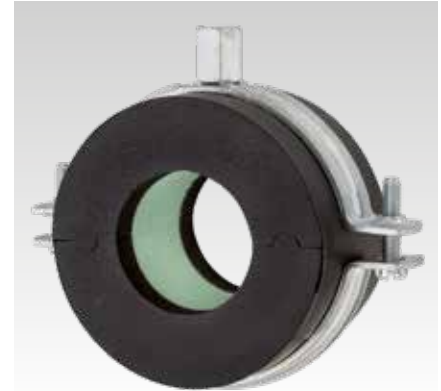
Application

- Insulation of pipelines in the field of refrigeration
- Specially suitable for attachments in ventilation, air-conditioning, heating, refrigeration installations as well as for hot and chilled water pipes

Your advantages

- Rigorous avoidance of temperature bridges in cold pipelines

- Highly effective insulation due to support elements made of PIR and a synthetic rubber mantle
- Insulation thickness matched to the increasing insulation layer thickness of the insulation sleeves
- Rubber surfaces on the face sides allow easy bonding with the rubber pipe insulation



Features

Material	Polyurethane-polyisocyanurate rigid foam, synthetic rubber
Fire classification	DIN EN 13501-1:2007 Euroclass E
Effective density [kg/m³]	120
Thermal conductivity	$\lambda = 0.034 \text{ W/mK at } 0 \text{ }^\circ\text{C}$ $\lambda = 0.038 \text{ W/mK at } +40 \text{ }^\circ\text{C}$
Temperature range	-45 °C to +105 °C
Water vapour diffusion resistance	$\mu = 10,000$
Design	Insulation clamp with ultraflexible closed cell insulation system with high water vapour diffusion resistance and low thermal conductivity, with two-piece pipe clamp

Type 2 - Insulation thickness 9.5 - 15 mm

Pipe outer Ø D			Insulation clamps					Insulation shells				
Copper pipes [mm]	Steel pipes [inch]	Steel pipes [mm]	Connecting thread	Max. recommended fastening distance [m]	Part no. complete clamp	Sales unit	Pack unit	Shell length L [mm]	Outer Ø shell [mm]	Part no. single shell	Sales unit	Pack unit
6		6	M10	2	150558	1	Pieces	50	25	149190	1	Pieces
10	1/8"	10.2			34				149192			
12		12.5			36				149193			
15	1/4"	13.5		40	149194							
18	3/8"	17.2		43	149195							
22	1/2"	21.3		47	149196							
28	3/4"	26.9		53	149197							
35	1"	33.7		61	149198							
42	1 1/4"	42.4		69	149200							
	1 1/2"	48.3		76	149201							
54		54		82	149202							
	2"	60.3		89	149204							
64		63.5		92	149205							
76.1	2 1/2"	76.1		105	149207							
88.9	3"	88.9		118	149209							
108		108		141	149211							
114	4"	114.3		144	149212							

Insulation clamps RTN+ type 2 and 4

two-piece, with single bossed clamps without lining and insulation shells, galvanised

Type 4 - Insulation thickness 15.5 - 25.5 mm

Pipe outer Ø D			Connecting thread	Insulation clamps			Sales unit	Pack unit	Insulation shells				
Copper pipes [mm]	Steel pipes [inch]	Steel pipes [mm]		Max. recommended fastening distance [m]	Part no. complete clamp	Shell length L [mm]			Outer Ø shell [mm]	Part no. single shell	Sales unit	Pack unit	
10	1/8"	10.2	M10	2	150581	50	Pieces	1	1	Pieces	46	149213	
12		12.5			150582						48	149214	
15	1/4"	13.5		150583	52						149215		
18	3/8"	17.2		2.25	150584						55	149216	
22	1/2"	21.3		2.75	150585						60	149217	
28	3/4"	26.9		3	150586						66	149219	
35	1"	33.7		3.5	150587						74	149220	
42	1 1/4"	42.4		3.75	150589						85	149222	
	1 1/2"	48.3		4.25	150590						91	149223	
54		54			150591						98	149224	
	2"	60.3		4.75	150593						105	149226	
64		63.5			150594						109	149227	
76.1	2 1/2"	76.1		5.5	150596						122	149229	
88.9	3"	88.9		6	150598						136	149231	
108		108			150600						156	149233	
114	4"	114.3			150601						162	149234	
133		133			150602						183	149235	
	5"				150603						189	149236	
159		160			150604						210	149237	
168		168.3			150606						219	149239	

